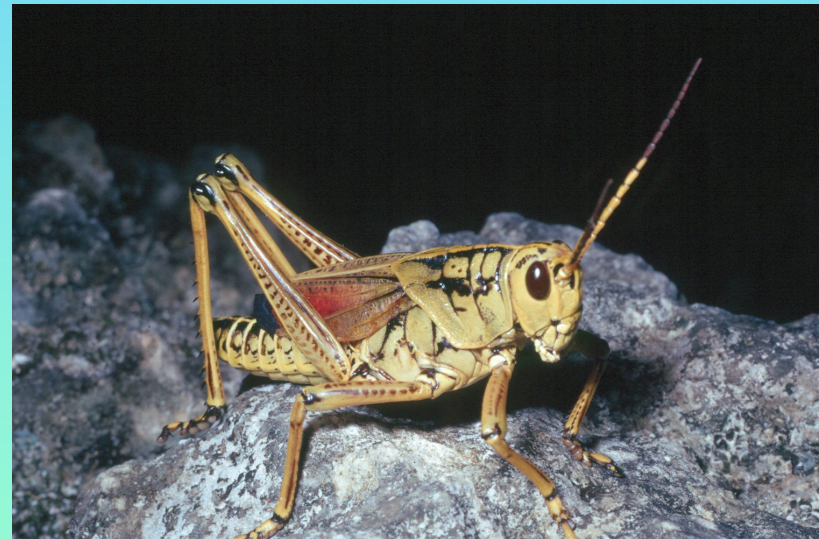


Orders of More Common Insects

- Coleoptera
 - Beetles and ladybugs
 - “Sheathed wing”
- Diptera
 - Flies
 - “Two wing”
- Hymenoptera
 - Bees, wasps, and ants
 - “Membrane wing”



- Lepidoptera
 - Moths and butterflies
 - “Scaled wing”
- Odonata
 - Dragonflies
 - “Toothed”
- Orthoptera
 - Grasshoppers
 - “Straight wing”



Life Cycle of Cabbage White Butterfly

- **Metamorphosis** =
 - Change in form or structure of body of some animals, especially insects, as they proceed through their life cycle
 - Insects
 - Transition from egg to larva to pupa to adult

- From Egg to Caterpillar
 - Butterfly lays eggs on underside of leaves
 - After 2-4 days, larva chews through egg
 - 5 larval stages
 - Also called **instars**
 - Larvae have silk glands in head
 - 4th and 5th instars devour leaves

- From Chrysalis to Butterfly
 - 10-12 days later, larva enters pupal stage
 - **Chrysalis** =
 - Pupal stage during which larval structures are broken down and adult structures are formed
 - About a week later, adult butterfly emerges



REVIEW

Egg → Larva → Pupa (or chrysalis) → Adult